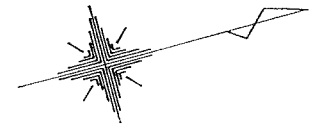
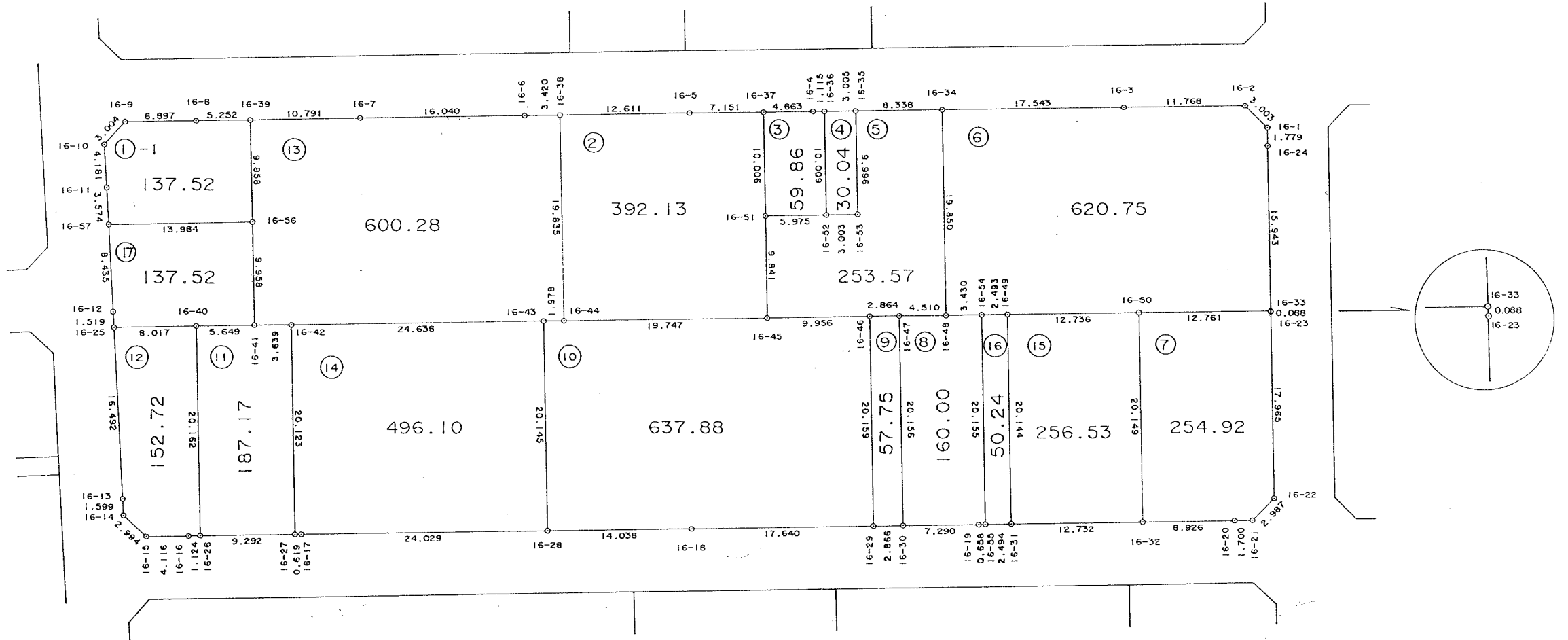


大網白里町永田土地区画整理事業

画地確定図



S=1:500



* * 面積計算 (座標法) * * (Work No.113)

地 器械点	番 視準点	16-12 内角	方向角	距離	[1] X(i)	[2] Y(i)	[3] X(i+1)-X(i-1)	[2]*[3]
16-40	16-25	89-45-04	194-03-08	8.017	-55075.859	43616.966	-2.797	-121996.653902
16-25	16-13	88-22-20	102-25-28	16.492	-55083.636	43615.020	-11.325	-493940.101500
16-13	16-14	180-13-15	102-38-43	1.599	-55087.184	43631.125	-3.898	-170074.125250
16-14	16-15	134-37-51	57-16-34	2.994	-55087.534	43632.686	1.268	55326.245848
16-15	16-16	137-15-01	14-31-35	4.116	-55085.916	43635.204	5.602	244444.412808
16-16	16-26	179-12-52	13-44-27	1.124	-55081.932	43636.237	5.077	221541.175249
16-26	16-40	90-33-37	284-18-04	20.162	-55080.839	43636.504	6.073	265004.488792
							倍面積	305.442045
							面積	152.7210225
							坪數	46.19

* * 面積計算 (座標法) * * (Work No.497)

地番	器械点	視準点	内角	方向角	距離	[1] X(i)	[2] Y(i)	[3] X(i+1)-X(i-1)	[2]*[3]
16-56	16-57	16-57	89-48-53	194-07-39	13.984	-55067.924	43608.715	-11.099	-484013.127785
16-57	16-12	16-12	88-22-54	102-30-33	8.436	-55081.485	43605.301	-15.388	-670998.371788
16-12	16-25	16-25	179-48-08	102-18-41	1.519	-55083.312	43613.536	-2.151	-93812.715936
16-25	16-40	16-40	91-44-27	14-03-08	8.017	-55083.636	43615.020	7.453	325062.744060
16-40	16-41	16-41	180-16-20	14-19-28	5.649	-55075.859	43616.966	13.250	577924.799500
16-41	16-56	16-56	89-59-18	284-18-46	9.958	-55070.386	43618.364	7.935	346111.718340
								倍面積	275.046391
								面積	137.5231955
								坪数	41.60

** 面積計算 (座標法) ** (Work No.114)

地 器械点	番 : 16-13 視準点	内角	方向角	距離	[1] X(i)	[2] Y(i)	[3] X(i+1)-X(i-1)	[2]*[3]
16-38	16-6	90-13-03	194-27-39	3.420	-55036.186	43606.605	1.568	68375.156640
16-6	16-7	179-49-18	194-16-57	16.040	-55039.498	43605.750	-18.856	-822230.022000
16-7	16-39	179-51-18	194-08-15	10.791	-55055.042	43601.793	-26.008	-1133995.432344
16-39	16-56	90-03-25	104-11-40	9.858	-55065.506	43599.158	-12.882	-561644.353356
16-56	16-41	180-07-06	104-18-46	9.958	-55067.924	43608.715	-4.880	-212810.529200
16-41	16-42	90-17-50	14-36-36	3.639	-55070.386	43618.364	1.060	46235.465840
16-42	16-43	179-36-28	14-13-04	24.638	-55066.864	43619.282	27.405	1195386.423210
16-43	16-44	180-20-07	14-33-11	1.978	-55042.981	43625.333	25.798	1125446.340734
16-44	16-38	89-41-25	284-14-36	19.835	-55041.066	43625.830	6.795	296437.514850
							倍面積	1200.564374
							面積	600.2821870
							坪數	181.58

* * 面積計算 (座標法) * * (Work No.103)

地番 器械点	16-2 視準点	内角	方向角	距離	[1] X(i)	[2] Y(i)	[3] X(i+1)-X(i-1)	[2]*[3]
16-51	16-37	179-56-12	284-15-08	10.006	-55019.497	43621.170	4.897	213612.869490
16-37	16-5	90-06-55	194-22-03	7.151	-55017.033	43611.472	-4.464	-194681.611008
16-5	16-38	179-49-52	194-11-55	12.611	-55023.961	43609.698	-19.153	-835256.545794
16-38	16-44	90-02-41	104-14-36	19.835	-55036.186	43606.608	-17.105	-745890.978525
16-44	16-45	90-03-02	14-17-38	19.747	-55041.066	43625.830	14.256	621929.832480
16-45	16-51	90-01-18	284-18-56	9.841	-55021.980	43630.706	21.569	941070.697714
							倍面積	784.264357
							面積	392.1321785
							坪數	118.61

* * 面積計算 (座標法) * * (Work No.104)

地 器械点	番 : 16-3 視準点	内角	方向角	距離	[1] X(i)	[2] Y(i)	[3] X(i+1)-X(i-1)	[2]*[3]
16-36	16-4	91-00-46	195-17-18	1.115	-55011.241	43612.952	1.392	60709.229184
16-4	16-37	178-49-42	194-07-00	4.863	-55012.317	43612.658	-5.792	-252604.515136
16-37	16-51	90-08-08	104-15-08	10.006	-55017.033	43611.472	-7.180	-313130.368960
16-51	16-52	90-06-52	14-22-00	5.975	-55019.497	43621.170	3.324	144996.769080
16-52	16-36	89-54-32	284-16-32	10.009	-55013.709	43622.652	8.256	360148.614912
							倍面積	119.729080
							面積	59.8645400
							坪數	18.10

* * 面積計算 (座標法) * * (Work No.105)

地 點	番 號	16-4 視準點	內角	方向角	距離	[1] X(i)	[2] Y(i)	[3] X(i+1)-X(i-1)	[2]*[3]
16-35	16-36	16-36	89-52-09	194-09-15	3.005	-55008.327	43613.687	-0.447	-10495.318089
16-36	16-52	16-52	90-07-17	104-16-32	10.009	-55011.241	43612.952	-5.382	-234724.907664
16-52	16-53	16-53	89-37-58	13-54-30	3.003	-55013.709	43622.652	0.447	19499.325444
16-53	16-35	16-35	90-22-36	284-17-06	9.996	-55010.794	43623.374	5.382	234780.998868
								倍面積	60.098559
								面積	30.0492795
								坪數	9.08

* * 面積計算 (座標法) * * (Work No.106)

地 器械点	番 : 16-5 視準点	内角	方向角	距離	[1] X(i)	[2] Y(i)	[3] X(i+1)-X(i-1)	[2]*[3]
16-34	16-35	89-58-15	194-13-37	8.338	-55000.246	43615.736	-3.193	-139265.045048
16-35	16-53	90-03-29	104-17-06	9.996	-55008.327	43613.687	-10.548	-460037.170476
16-53	16-52	269-37-24	193-54-30	3.003	-55010.794	43623.374	-5.382	-234780.998868
16-52	16-51	180-27-30	194-22-00	5.975	-55013.709	43622.652	-8.703	-379647.940356
16-51	16-45	89-56-56	104-18-56	9.841	-55019.497	43621.170	-8.221	-358609.638570
16-45	16-46	89-44-39	14-03-35	9.956	-55021.930	43630.706	7.225	315231.850850
16-46	16-47	180-16-26	14-20-01	2.864	-55012.272	43633.124	12.433	542490.630692
16-47	16-48	180-20-02	14-40-03	4.510	-55009.497	43633.833	7.138	311458.299954
16-48	16-34	89-35-19	284-15-22	19.850	-55005.134	43634.975	9.251	403667.153725
							倍面積	507.141903
							面積	253.5709515
							坪數	76.70

* * 面積計算 (座標法) * * (Work No.107)

地 器械点	番 視準点	16-6 内角	方向角	距離	[1] X(i)	[2] Y(i)	[3] X(i+1)-X(i-1)	[2]*[3]
16-33	16-24	89-54-20	284-14-08	15.943	-54974.674	43642.687	16.284	710677.515108
16-24	16-1	180-26-06	284-40-14	1.779	-54970.754	43627.293	4.571	190694.633443
16-1	16-2	134-46-07	239-26-21	3.003	-54970.303	43625.512	-1.076	-46941.050912
16-2	16-3	134-43-56	194-10-17	11.768	-54971.830	43622.926	-12.937	-564349.793662
16-3	16-34	180-02-48	194-13-05	17.543	-54983.240	43620.045	-28.416	-1239507.198720
16-34	16-48	90-02-17	104-15-22	19.850	-55000.246	43615.736	-21.894	-954922.923984
16-48	16-54	89-23-37	13-38-59	3.430	-55005.134	43634.975	-1.554	-67808.751150
16-54	16-49	180-42-54	14-21-53	2.493	-55001.800	43635.785	5.749	250862.127965
16-49	16-50	179-50-12	14-12-05	12.736	-54999.385	43636.403	14.762	644160.581086
16-50	16-33	180-07-43	14-19-48	12.761	-54987.038	43639.528	24.711	1078376.376408
							倍面積	1241.517582
							面積	620.7587910
							坪數	187.77

* * 面積計算 (座標法) * * (Work No.108)

地番	器械点	視準点	内角	方向角	距離	[1] X(i)	[2] Y(i)	[3] X(i+1)-X(i-1)	[2]*[3]
16-23	16-33	16-33	177-34-10	281-48-58	0.088	-54974.692	43642.773	4.439	193730.269347
16-33	16-50	16-50	92-30-50	194-19-48	12.761	-54974.674	43642.687	-12.346	-538812.613702
16-50	16-32	16-32	89-55-32	104-15-20	20.149	-54987.038	43639.528	-17.326	-756098.462128
16-32	16-20	16-20	90-01-30	14-16-50	8.926	-54992.000	43659.056	3.688	161014.598528
16-20	16-21	16-21	179-56-39	14-13-29	1.700	-54983.350	43661.258	10.297	449579.973626
16-21	16-22	16-22	135-50-51	330-04-20	2.987	-54981.703	43661.676	4.237	184994.521212
16-22	16-23	16-23	134-10-28	284-14-48	17.966	-54979.113	43660.185	7.011	306101.557035
								倍面積	509.843918
								面積	254.9219590
								坪數	77.11

* * 面積計算 (座標法) * * (Work No.116)

地 器械点	番 : 16-15 視準点	内角	方向角	距離	[1] X(i)	[2] Y(i)	[3] X(i+1)-X(i-1)	[2]*[3]
16-50	16-49	89-56-45	194-12-05	12.736	-54987.038	43639.528	-7.385	-322277.914280
16-49	16-31	90-02-28	104-14-33	20.144	-54999.385	43636.403	-17.303	-755040.681109
16-31	16-32	89-58-55	14-13-28	12.732	-55004.341	43655.928	7.385	322399.028280
16-32	16-50	90-01-52	284-15-20	20.149	-54992.000	43659.056	17.303	755432.645968
							倍面積	513.078859
							面積	256.5394295
							坪數	77.60

* * 面積計算 (座標法) * * (Work No.485)

地 器械点	番 視準点	16-16 内角	方向角	距離	[1] X(i)	[2] Y(i)	[3] X(i+1)-X(i-1)	[2]*[3]
16-49	16-54	90-07-20	194-21-53	2.493	-54999.385	43636.403	-2.541	-110880.100023
16-54	16-55	89-52-50	104-14-43	20.155	-55001.800	43635.785	-7.375	-321813.914375
16-55	16-31	89-51-36	14-06-19	2.494	-55006.760	43655.320	-2.541	-110928.168120
16-31	16-49	90-08-14	284-14-33	20.144	-55004.341	43655.928	7.375	321962.469000
							倍面積	100.486528
							面積	50.2432640
							坪數	15.19

* * 面積計算 (座標法) * * (Work No.109)

地 器械点	番 ; 視準点	16-8 内角	方向角	距離	[1] X(i)	[2] Y(i)	[3] X(i+1)-X(i-1)	[2]*[3]
16-54	16-48	89-24-16	193-38-59	3.430	-55001.800	43635.785	1.626	70951.786410
16-48	16-47	181-01-04	194-40-03	4.510	-55005.134	43634.975	-7.897	-335858.402575
16-47	16-30	89-35-53	104-15-56	20.156	-55009.497	43633.833	-9.330	-407103.661890
16-30	16-19	89-59-35	14-15-31	7.290	-55014.464	43653.368	2.098	91584.766064
16-19	16-55	179-29-57	13-45-28	0.658	-55007.399	43655.164	7.704	336319.383456
16-55	16-54	90-29-15	284-14-43	20.155	-55006.760	43655.320	5.599	244426.136680
							倍面積	320.008145
							面積	160.0040725
							坪數	48.40

* * 面積計算 (座標法) * *

(Work No.110)

地番 : 16-9

器械点	視準点	内角	方向角	距離	[1] X(i)	[2] Y(i)	[3] X(i+1)-X(i-1)	[2]*[3]
16-47	16-46	90-04-05	194-20-01	2.864	-55009.497	43633.833	2.192	95645.361936
16-46	16-29	89-56-18	104-16-19	20.159	-55012.272	43633.124	-7.745	-337938.545380
16-29	16-30	90-00-10	14-16-29	2.866	-55017.242	43652.661	-2.192	-95686.632912
16-30	16-47	89-59-27	284-15-56	20.156	-55014.464	43653.368	7.745	338095.335160
							倍面積	115.518804
							面積	57.7594020
							坪數	17.47

* * 面積計算 (座標法) * * (Work No.111)

地 器械点	番 視準点	16-10 内角	方向角	距離	[1] X(i)	[2] Y(i)	[3] X(i+1)-X(i-1)	[2]*[3]
16-46	16-45	89-47-16	194-03-35	9.956	-55012.272	43633.124	-4.688	-204552.085312
16-45	16-44	180-14-03	194-17-38	19.747	-55021.930	43630.706	-28.794	-1256302.548864
16-44	16-43	180-15-33	194-33-11	1.978	-55041.066	43625.830	-21.051	-918367.347330
16-43	16-28	89-42-33	104-15-44	20.145	-55042.981	43625.333	-6.878	-300055.040374
16-28	16-18	90-00-47	14-16-31	14.038	-55047.944	43644.857	8.642	377178.854194
16-18	16-29	179-58-39	14-15-10	17.640	-55034.339	43648.318	30.702	1340090.659236
16-29	16-46	90-01-09	284-16-19	20.159	-55017.242	43652.661	22.067	963283.270287
							倍面積	1275.762137
							面積	637.8810685
							坪數	192.95

* * 面積計算 (座標法) * * (Work No.115)

地 器械点	番 視準点	16-14 内角	方向角	距離	[1] X(i)	[2] Y(i)	[3] X(i+1)-X(i-1)	[2]*[3]
16-43	16-42	89-57-20	194-13-04	24.638	-55042.981	43625.333	-18.920	-825391.300360
16-42	16-27	90-04-20	104-17-24	20.123	-55066.864	43619.282	-28.850	-1258416.285700
16-27	16-17	89-36-35	13-53-59	0.619	-55071.831	43638.782	-4.366	-190526.922212
16-17	16-28	180-22-40	14-16-39	24.029	-55071.230	43638.931	23.887	1042403.144797
16-28	16-43	89-59-05	284-15-44	20.145	-55047.944	43644.857	28.249	1232923.565393
							倍面積	992.201918
							面積	496.1009590
							坪數	150.07

* * 面積計算 (座標法) * * (Work No.112)

地 器械点	番 : 16-11 視準点	内角	方向角	距離	[1] X(i)	[2] Y(i)	[3] X(i+1)-X(i-1)	[2]*[3]
16-42	16-41	90-19-12	194-36-36	3.639	-55066.864	43619.282	1.446	63029.862490
16-41	16-40	179-42-52	194-19-28	5.649	-55070.386	43618.364	-8.995	-392347.184180
16-40	16-26	89-58-36	104-18-04	20.162	-55075.859	43616.966	-10.453	-455928.145598
16-26	16-27	89-53-32	14-11-36	9.292	-55080.839	43636.504	4.028	175767.838112
16-27	16-42	90-05-48	284-17-24	20.123	-55071.831	43638.782	13.975	609851.978450
							倍面積	374.349274
							面積	187.1746370
							坪數	56.62

* * 面積計算 (座標法) * * (Work No.102)

地番	器械点	視準点	16-1-1 内角	方向角	距離	[1] X(i)	[2] Y(i)	[3] X(i+1)-X(i-1)	[2]*[3]
16-39	16-8	16-8	90-09-39	194-21-19	5.252	-55065.506	43599.158	-2.671	-116453.351018
16-8	16-9	16-9	179-55-37	194-16-56	6.897	-55070.595	43597.855	-11.773	-518277.546915
16-9	16-10	16-10	134-12-32	148-29-28	3.004	-55077.279	43596.154	-9.245	-403046.443730
16-10	16-11	16-11	133-43-36	102-13-04	4.181	-55079.840	43597.723	-3.446	-150237.753458
16-11	16-57	16-57	180-03-59	102-17-03	3.574	-55080.725	43601.810	-1.645	-71724.977450
16-57	16-56	16-56	91-50-36	14-07-39	13.984	-55081.485	43605.301	12.801	558191.458101
16-56	16-39	16-39	90-04-01	284-11-40	9.858	-55067.924	43608.715	15.979	696823.656985
								倍面積	275.042515
								面積	137.5212575
								坪數	41.60