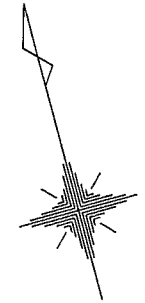
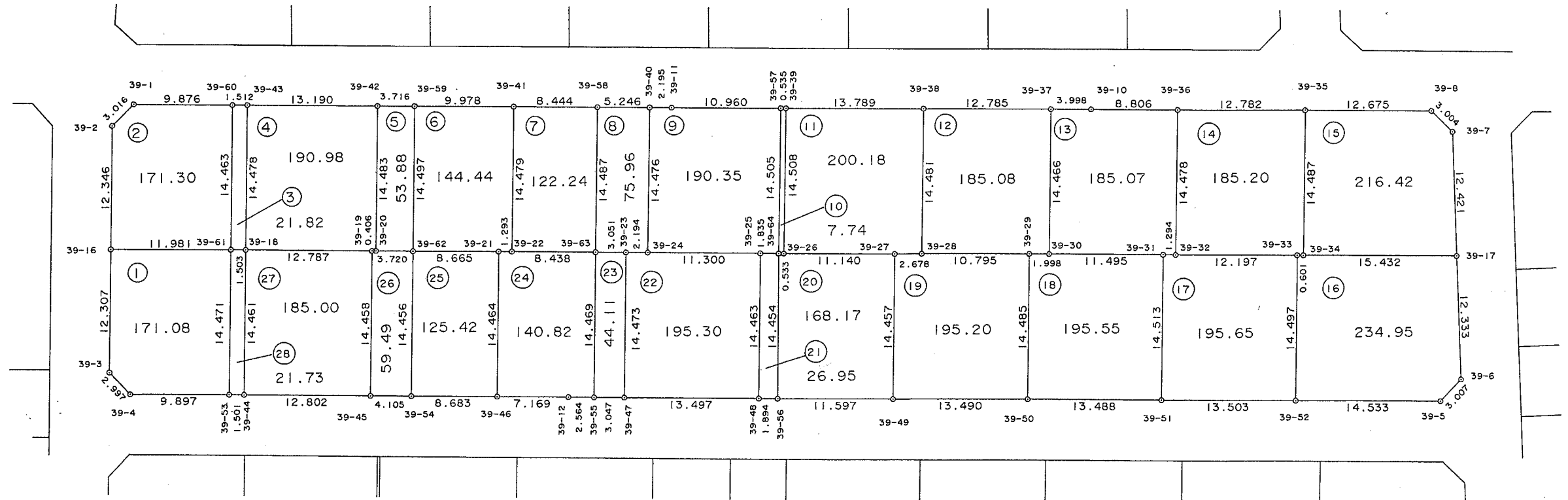


大網白里町永田土地区画整理事業

画地確定図



S=1:500



* * 面積計算 (座標法) * * (Work No.291)

地 器械点	番 : 39-1 視準点	内角	方向角	距離	[1] X(i)	[2] Y(i)	[3] X(i+1)-X(i-1)	[2]*[3]
39-16	39-3	90-05-44	195-34-56	12.307	-55058.488	43742.423	-8.656	-378634.413488
39-3	39-4	135-56-28	151-31-24	2.997	-55070.343	43739.117	-14.489	-633736.066213
39-4	39-53	134-00-06	105-31-30	9.897	-55072.977	43740.546	-5.283	-231081.304518
39-53	39-61	90-03-26	15-34-56	14.471	-55075.626	43750.082	11.290	493938.425780
39-61	39-16	89-54-16	285-29-12	11.981	-55061.687	43753.969	17.138	749855.520722
							倍面積	342.162283
							面積	171.0811415
							坪數	51.75

* * 面積計算 (座標法) * * (Work No.301)

地番 : 39-2								
器械点	視準点	内角	方向角	距離	[1] X(i)	[2] Y(i)	[3] X(i+1)-X(i-1)	[2]*[3]
39-1	39-2	134-29-30	240-08-45	3.016	-55045.090	43748.341	1.163	50879.320583
39-2	39-16	135-21-53	195-30-38	12.346	-55046.591	43745.725	-13.398	-586105.223550
39-16	39-61	89-58-34	105-29-12	11.981	-55058.488	43742.423	-15.096	-660335.617608
39-61	39-60	90-04-42	15-33-54	14.463	-55061.687	43753.969	10.734	469655.103246
39-60	39-1	90-05-21	285-39-15	9.876	-55047.754	43757.850	16.597	726249.036450
							倍面積	342.619121
							面積	171.3095605
							坪數	51.82

* * 面積計算 (座標法) * * (Work No.449)

地番	器械点	視準点	内角	方向角	距離	[1] X(i)	[2] Y(i)	[3] X(i+1)-X(i-1)	[2]*[3]
39-60	39-61	39-61	90-11-49	195-33-54	14.463	-55047.754	43757.850	-13.532	-592131.226200
39-61	39-18	39-18	90-22-15	105-56-09	1.503	-55061.687	43753.969	-14.346	-627694.439274
39-18	39-43	39-43	89-39-51	15-36-00	14.478	-55062.100	43755.415	13.532	592098.275780
39-43	39-60	39-60	89-46-05	285-22-05	1.512	-55048.155	43759.308	14.346	627771.032568
								倍面積	43.642874
								面積	21.8214370
								坪數	6.60

* * 面積計算 (座標法) * * (Work No.302)

地 器械点	番 : 39-4 視準点	内角	方向角	距離	[1] X(i)	[2] Y(i)	[3] X(i+1)-X(i-1)	[2]*[3]
39-18	39-19	89-57-39	105-33-39	12.787	-55062.100	43755.415	-17.375	-760250.335625
39-19	39-20	180-35-36	106-09-15	0.406	-55065.530	43767.733	-3.543	-155069.078019
39-20	39-42	89-25-54	15-35-09	14.483	-55065.643	43768.123	13.838	605663.286074
39-42	39-43	89-58-10	285-33-19	13.190	-55051.692	43772.014	17.488	765484.980832
39-43	39-18	90-02-41	195-36-00	14.478	-55048.155	43759.308	-10.408	-455446.877664
							倍面積	381.975598
							面積	190.9877990
							坪數	57.77

* * 面積計算 (座標法) * * (Work No.450)

地 器械点	番 : 視準点	39-5 内角	方向角	距離	[1] X(i)	[2] Y(i)	[3] X(i+1)-X(i-1)	[2]*[3]
39-20	39-62	90-07-17	105-42-26	3.720	-55065.643	43768.123	-14.958	-654683.583834
39-62	39-59	89-51-54	15-34-20	14.497	-55066.650	43771.704	12.958	567193.740432
39-59	39-42	89-55-18	285-29-38	3.716	-55052.685	43775.596	14.958	654795.364968
39-42	39-20	90-05-31	195-35-09	14.483	-55051.692	43772.014	-12.958	-567197.757412
							倍面積	107.764154
							面積	53.8820770
							坪數	16.29

* * 面積計算 (座標法) * * (Work No.303)

地番	器械点	視準点	内角	方向角	距離	[1] X(i)	[2] Y(i)	[3] X(i+1)-X(i-1)	[2]*[3]
39-62	39-21	39-21	89-57-11	105-31-31	8.665	-55066.650	43771.704	-16.284	-712778.427936
39-21	39-22	39-22	179-35-48	105-07-19	1.293	-55068.969	43780.053	-2.657	-116323.600821
39-22	39-41	39-41	90-31-42	15-39-01	14.479	-55069.307	43781.301	13.604	595600.818804
39-41	39-59	39-59	89-55-45	285-34-46	9.978	-55055.365	43785.207	16.622	727797.710754
39-59	39-62	39-62	89-59-34	195-34-20	14.497	-55052.685	43775.596	-11.285	-494007.600860
								倍面積	288.899941
								面積	144.4499705
								坪數	43.69

* * 面積計算 (座標法) * * (Work No.304)

地番	器械点	視準点	内角	方向角	距離	[1] X(i)	[2] Y(i)	[3] X(i+1)-X(i-1)	[2]*[3]
39-22	39-63	39-63	89-57-53	105-36-54	8.438	-55069.307	43781.301	-16.213	-709826.233113
39-63	39-58	39-58	90-03-28	15-40-22	14.487	-55071.578	43789.428	11.677	511329.150756
39-58	39-41	39-41	89-53-17	285-33-39	8.444	-55057.630	43793.341	16.213	710021.437633
39-41	39-22	39-22	90-05-22	195-39-01	14.479	-55055.365	43785.207	-11.677	-511279.862139
								倍面積	244.493137
								面積	122.2465685
								坪數	36.97

* * 面積計算 (座標法) * * (Work No.448)

地番 : 39-8								
器械点	視準点	内角	方向角	距離	[1] X(i)	[2] Y(i)	[3] X(i+1)-X(i-1)	[2]*[3]
39-63	39-23	89-48-52	105-29-14	3.051	-55071.578	43789.428	-14.762	-646419.536136
39-23	39-24	179-54-42	105-23-56	2.194	-55072.392	43792.367	-1.397	-61177.936699
39-24	39-40	90-16-47	15-40-43	14.476	-55072.975	43794.483	13.355	584875.320465
39-40	39-58	89-53-00	285-33-43	5.246	-55059.037	43798.395	15.345	672086.371275
39-58	39-63	90-06-39	195-40-22	14.487	-55057.630	43793.341	-12.541	-549212.289481
							倍面積	151.929424
							面積	75.9647120
							坪數	22.97

* * 面積計算 (座標法) * * (Work No.305)

地 器械点	番 : 39-9 視準点	内角	方向角	距離	[1] X(i)	[2] Y(i)	[3] X(i+1)-X(i-1)	[2]*[3]
39-24	39-25	89-56-44	105-37-27	11.300	-55072.975	43794.483	-16.981	-743674.115823
39-25	39-64	180-34-26	106-11-53	1.835	-55076.018	43805.365	-3.555	-155728.072575
39-64	39-57	89-33-27	15-45-20	14.505	-55076.530	43807.128	13.448	589118.257344
39-57	39-11	89-48-44	285-34-04	10.960	-55062.570	43811.066	16.901	740450.826466
39-11	39-40	180-04-09	285-38-13	2.195	-55059.629	43800.508	3.533	154747.194764
39-40	39-24	90-02-30	195-40-43	14.476	-55059.037	43798.395	-13.346	-584533.379670
							倍面積	380.710506
							面積	190.3552530
							坪數	57.58

* * 面積計算 (座標法) * * (Work No.451)

地番 : 39-10								
器械点	視準点	内角	方向角	距離	[1] X(i)	[2] Y(i)	[3] X(i+1)-X(i-1)	[2]*[3]
39-64	39-26	90-08-54	105-54-14	0.533	-55076.530	43807.128	-14.106	-617943.347568
39-26	39-39	89-51-30	15-45-44	14.508	-55076.676	43807.640	13.816	605246.354240
39-39	39-57	89-53-21	285-39-05	0.535	-55062.714	43811.581	14.106	618006.161586
39-57	39-64	90-06-15	195-45-20	14.505	-55062.570	43811.066	-13.816	-605293.687856
							倍面積	15.480402
							面積	7.7402010
							坪數	2.34

** 面積計算 (座標法) ** (Work No.306)

地 器械点	番 : 39-11 視準点	内角	方向角	距離	[1] X(i)	[2] Y(i)	[3] X(i+1)-X(i-1)	[2]*[3]
39-26	39-27	89-46-11	105-31-55	11.140	-55076.676	43807.640	-16.945	-742320.459800
39-27	39-28	179-33-58	105-05-53	2.678	-55079.659	43818.373	-3.681	-161295.431013
39-28	39-38	90-33-02	15-38-55	14.481	-55080.357	43820.959	13.247	580496.243873
39-38	39-39	89-54-25	285-33-20	13.789	-55066.412	43824.865	17.643	773202.093195
39-39	39-26	90-12-24	195-45-44	14.508	-55062.714	43811.581	-10.264	-449682.067384
							倍面積	400.378871
							面積	200.1894355
							坪数	60.55

* * 面積計算 (座標法) * * (Work No.307)

地 器械点	番 : 39-12 視準点	内角	方向角	距離	[1] X(i)	[2] Y(i)	[3] X(i+1)-X(i-1)	[2]*[3]
39-28	39-29	89-52-14	105-31-09	10.795	-55080.357	43820.959	-16.833	-737638.202847
39-29	39-30	180-09-55	105-41-04	1.998	-55083.245	43831.361	-3.429	-150297.736869
39-30	39-37	89-55-54	15-36-58	14.466	-55083.786	43833.284	13.392	587015.339328
39-37	39-38	89-59-47	285-36-45	12.785	-55069.853	43837.179	17.374	761627.147946
39-38	39-28	90-02-10	195-38-55	14.481	-55066.412	43824.865	-10.504	-460336.381960
							倍面積	370.165598
							面積	185.0827990
							坪數	55.98

* * 面積計算 (座標法) * * (Work No.308)

地 器械点	番 : 39-13 視準点	内角	方向角	距離	[1] X(i)	[2] Y(i)	[3] X(i+1)-X(i-1)	[2]*[3]
39-30	39-31	89-53-14	105-30-12	11.495	-55083.786	43833.284	-17.005	-745384.994420
39-31	39-32	180-48-30	106-18-42	1.294	-55086.858	43844.361	-3.436	-150649.224396
39-32	39-36	89-21-35	15-40-17	14.478	-55087.222	43845.603	13.576	595247.906328
39-36	39-10	89-51-14	285-31-31	8.806	-55073.282	43849.514	16.297	714615.529658
39-10	39-37	180-01-49	285-33-20	3.998	-55070.925	43841.030	3.429	150330.891870
39-37	39-30	90-03-38	195-36-58	14.466	-55069.853	43837.179	-12.861	-563789.959119
							倍面積	370.149921
							面積	185.0749605
							坪數	55.98

* * 面積計算 (座標法) * *

(Work No.309)

地番 : 39-14									
器械点	視準点	内角	方向角	距離	[1] X(i)	[2] Y(i)	[3] X(i+1)-X(i-1)	[2]*[3]	
39-32	39-33	89-52-01	105-32-18	12.197	-55087.222	43845.603	-17.207	-754451.290821	
39-33	39-34	180-20-26	105-52-44	0.601	-55090.489	43857.354	-3.431	-150474.581574	
39-34	39-35	89-43-50	15-36-34	14.487	-55090.653	43857.932	13.788	604713.166416	
39-35	39-36	89-54-15	285-30-49	12.782	-55076.701	43861.830	17.371	761923.848930	
39-36	39-32	90-09-28	195-40-17	14.478	-55073.282	43849.514	-10.521	-461340.736794	
							倍面積	370.406157	
							面積	185.2030785	
							坪數	56.02	

* * 面積計算 (座標法) * * (Work No.310)

地 器械点	番 : 視準点	39-15 内角	方向角	距離	[1] X(i)	[2] Y(i)	[3] X(i+1)-X(i-1)	[2]*[3]
39-34	39-17	89-58-54	105-35-28	15.432	-55090.653	43857.932	-18.100	-793828.569200
39-17	39-7	87-20-49	12-56-17	12.421	-55094.801	43872.796	7.958	349139.710568
39-7	39-8	136-12-14	329-08-31	3.004	-55082.695	43875.577	14.685	644312.848245
39-8	39-35	136-29-27	285-37-58	12.675	-55080.116	43874.036	5.994	262980.971784
39-35	39-34	89-58-36	195-36-34	14.487	-55076.701	43861.830	-10.537	-462172.102710
							倍面積	432.858687
							面積	216.4293435
							坪数	65.46

* * 面積計算 (座標法) * * (Work No.300)

地 器械点	番 : 39-16 視準点	内角	方向角	距離	[1] X(i)	[2] Y(i)	[3] X(i+1)-X(i-1)	[2]*[3]
39-52	39-5	90-06-34	105-37-13	14.533	-55104.458	43853.477	-17.882	-784187.875714
39-5	39-6	133-25-25	59-02-38	3.007	-55108.371	43867.473	-2.367	-103834.308591
39-6	39-17	133-48-45	12-51-23	12.333	-55106.825	43870.052	13.570	595316.605640
39-17	39-34	92-44-05	285-35-28	15.432	-55094.801	43872.796	16.172	709510.856912
39-34	39-33	180-17-16	285-52-44	0.601	-55090.653	43857.932	4.312	189115.402784
39-33	39-52	89-37-55	195-30-39	14.497	-55090.489	43857.354	-13.805	-605450.771970
							倍面積	469.909061
							面積	234.9545305
							坪數	71.07

* * 面積計算 (座標法) * * (Work No.299)

地番 器械点	番 : 39-17 視準点	内角	方向角	距離	[1] X(i)	[2] Y(i)	[3] X(i+1)-X(i-1)	[2]*[3]
39-51	39-52	89-59-17	105-32-46	13.503	-55100.839	43840.469	-17.600	-771592.254400
39-52	39-33	89-57-53	15-30-39	14.497	-55104.458	43853.477	10.350	453883.486950
39-33	39-32	90-01-39	285-32-18	12.197	-55090.489	43857.354	17.236	755925.353544
39-32	39-31	180-46-24	286-18-42	1.294	-55087.222	43845.603	3.631	159203.384493
39-31	39-51	89-14-47	195-33-29	14.513	-55086.858	43844.361	-13.617	-597028.663737
							倍面積	391.306850
							面積	195.6534250
							坪数	59.18

** 面積計算 (座標法) ** (Work No.298)

地番 : 39-18								
器械点	視準点	内角	方向角	距離	[1] X(i)	[2] Y(i)	[3] X(i+1)-X(i-1)	[2]*[3]
39-50	39-51	90-06-40	105-38-53	13.488	-55097.201	43827.481	-17.594	-771100.700714
39-51	39-31	89-54-36	15-33-29	14.513	-55100.839	43840.469	10.343	453441.970867
39-31	39-30	89-56-43	285-30-12	11.495	-55086.858	43844.361	17.053	747677.888133
39-30	39-29	180-10-52	285-41-04	1.998	-55083.786	43833.284	3.613	158369.655092
39-29	39-50	89-51-09	195-32-13	14.485	-55083.245	43831.361	-13.415	-687997.707815
							倍面積	391.105563
							面積	195.5527815
							坪数	59.15

* * 面積計算 (座標法) * * (Work No.297)

地番	器械点	視準点	内角	方向角	距離	[1] X(i)	[2] Y(i)	[3] X(i+1)-X(i-1)	[2]*[3]
39-49	39-50	39-50	89-57-07	105-33-15	13.490	-55093.584	43814.485	-17.542	-768593.695870
39-50	39-29	39-29	89-58-58	15-32-13	14.485	-55097.201	43827.481	10.339	453132.326059
39-29	39-28	39-28	89-58-56	285-31-09	10.795	-55083.245	43831.361	16.844	738295.444684
39-28	39-27	39-27	179-34-44	285-05-53	2.678	-55080.357	43820.959	3.586	157141.958974
39-27	39-49	39-49	90-30-15	195-36-08	14.457	-55079.659	43818.373	-13.227	-579585.619671
								倍面積	390.414176
								面積	195.2070880
								坪數	59.05

* * 面積計算 (座標法) * * (Work No.296)

地番 : 39-20								
器械点	視準点	内角	方向角	距離	[1] X(i)	[2] Y(i)	[3] X(i+1)-X(i-1)	[2]*[3]
39-56	39-49	90-15-42	105-33-48	11.597	-55090.472	43803.313	-17.054	-747021.699902
39-49	39-27	90-02-20	15-36-08	14.457	-55093.584	43814.485	10.813	473766.026305
39-27	39-26	89-55-47	285-31-55	11.140	-55079.659	43818.373	16.908	740881.050684
39-26	39-64	180-22-19	285-54-14	0.533	-55076.676	43807.640	3.129	137074.105560
39-64	39-56	89-23-52	195-18-06	14.454	-55076.530	43807.128	-13.796	-604363.137888
							倍面積	336.344759
							面積	168.1723795
							坪數	50.87

* * 面積計算 (座標法) * * (Work No.452)

地 器械点	番 : 視準点	39-21 内角	方向角	距離	[1] X(i)	[2] Y(i)	[3] X(i+1)-X(i-1)	[2]*[3]
39-25	39-48	89-20-14	195-32-07	14.463	-55076.018	43805.365	-13.423	-587999.414395
39-48	39-56	90-23-14	105-55-21	1.894	-55089.953	43801.492	-14.454	-633106.765368
39-56	39-64	89-22-45	15-18-06	14.454	-55090.472	43803.313	13.423	587971.870399
39-64	39-25	90-53-47	286-11-53	1.835	-55076.530	43807.128	14.454	633188.228112
							倍面積	53.918748
							面積	26.9593740
							坪數	8.15

* * 面積計算 (座標法) * * (Work No.295)

地 器械点	番 : 39-22 視準点	内角	方向角	距離	[1] X(i)	[2] Y(i)	[3] X(i+1)-X(i-1)	[2]*[3]
39-47	39-48	89-59-56	105-32-40	13.497	-55086.336	43788.489	-17.561	-768969.655329
39-48	39-25	89-59-27	15-32-07	14.463	-55089.953	43801.492	10.318	451943.794456
39-25	39-24	90-05-20	285-37-27	11.300	-55076.018	43805.365	16.978	743727.486970
39-24	39-23	179-46-29	285-23-56	2.194	-55072.975	43794.483	3.626	158798.795358
39-23	39-47	90-08-48	195-32-44	14.473	-55072.392	43792.367	-13.361	-585109.815487
							倍面積	390.605968
							面積	195.3029840
							坪數	59.07

* * 面積計算 (座標法) * * (Work No.453)

地番 : 39-23					[1]	[2]	[3]	[2]*[3]
器械点	視準点	内角	方向角	距離	X(i)	Y(i)	X(i+1)-X(i-1)	
39-63	39-55	90-02-37	195-31-51	14.469	-55071.578	43789.428	-13.126	-574780.031928
39-55	39-47	90-02-15	105-34-06	3.047	-55085.518	43785.554	-14.758	-646187.205932
39-47	39-23	89-58-38	15-32-44	14.473	-55086.336	43788.489	13.126	574767.706614
39-23	39-63	89-56-30	285-29-14	3.051	-55072.392	43792.367	14.758	646287.752186
							倍面積	88.220940
							面積	44.1104700
							坪數	13.34

* * 面積計算 (座標法) * * (Work No.294)

地番	器械点	視準点	内角	方向角	距離	[1] X(i)	[2] Y(i)	[3] X(i+1)-X(i-1)	[2]*[3]
39-46	39-12	39-12	90-00-09	105-32-42	7.169	-55082.904	43776.177	-15.857	-694158.838689
39-12	39-55	39-55	180-07-11	105-39-53	2.564	-55084.826	43783.085	-2.614	-114448.984190
39-55	39-63	39-63	89-51-58	15-31-51	14.469	-55085.518	43785.554	13.248	580071.019392
39-63	39-22	39-22	90-05-03	285-36-54	8.438	-55071.578	43789.428	16.211	709870.417308
39-22	39-21	39-21	179-30-25	285-07-19	1.293	-55069.307	43781.301	2.609	114225.414309
39-21	39-46	39-46	90-25-14	195-32-33	14.464	-55068.969	43780.053	-13.597	-595277.380641
								倍面積	281.647489
								面積	140.8237445
								坪數	42.59

* * 面積計算 (座標法) * * (Work No.293)

地番	器械点	視準点	内角	方向角	距離	[1] X(i)	[2] Y(i)	[3] X(i+1)-X(i-1)	[2]*[3]
39-54	39-46	39-46	89-57-44	105-34-32	8.683	-55080.573	43767.813	-16.254	-711402.032502
39-46	39-21	39-21	89-58-01	15-32-33	14.464	-55082.904	43776.177	11.604	507978.757908
39-21	39-62	39-62	89-58-58	285-31-31	8.665	-55068.969	43780.053	16.254	711600.981462
39-62	39-54	39-54	90-05-17	195-36-48	14.456	-55066.650	43771.704	-11.604	-507926.853216
								倍面積	250.853652
								面積	125.4268260
								坪數	37.94

* * 面積計算 (座標法) * * (Work No.454)

地番	器械点	視準点	内角	方向角	距離	[1] X(i)	[2] Y(i)	[3] X(i+1)-X(i-1)	[2]*[3]
39-20	39-19	39-26	180-26-49	286-09-15	0.406	-55065.643	43768.123	1.120	49020.297760
39-19	39-45		89-22-34	195-31-49	14.458	-55065.530	43767.733	-13.817	-604738.766861
39-45	39-54		90-11-48	105-43-37	4.105	-55079.460	43763.862	-15.043	-658339.776066
39-54	39-62		89-53-11	15-36-48	14.456	-55080.573	43767.813	12.810	560665.684530
39-62	39-20		90-05-38	285-42-26	3.720	-55066.650	43771.704	14.930	653511.540720
								倍面積	118.980083
								面積	59.4900415
								坪數	17.99

* * 面積計算 (座標法) * * (Work No.292)

地 器械点	番 : 39-27 視準点	内角	方向角	距離	[1] X(i)	[2] Y(i)	[3] X(i+1)-X(i-1)	[2]*[3]
39-44	39-45	89-57-31	105-32-51	12.802	-55076.029	43751.528	-17.360	-759526.526080
39-45	39-19	89-58-58	15-31-49	14.458	-55079.460	43763.862	10.499	459476.787138
39-19	39-18	90-01-50	285-33-39	12.787	-55065.530	43767.733	17.360	759807.844880
39-18	39-44	90-01-41	195-35-20	14.461	-55062.100	43755.415	-10.499	-459388.102085
							倍面積	370.003853
							面積	185.0019265
							坪數	55.96

* * 面積計算 (座標法) * * (Work No.455)

地番 : 39-28					[1]	[2]	[3]	[2]*[3]
器械点	視準点	内角	方向角	距離	X(i)	Y(i)	X(i+1)-X(i-1)	
39-61	39-53	89-38-47	195-34-56	14.471	-55061.687	43753.969	-13.526	-591816.184694
39-53	39-44	89-58-34	105-33-30	1.501	-55075.626	43750.082	-14.342	-627463.676044
39-44	39-18	90-01-50	15-35-20	14.461	-55076.029	43751.528	13.526	591783.167728
39-18	39-61	90-20-49	285-56-09	1.503	-55062.100	43755.415	14.342	627540.161930
							倍面積	43.468920
							面積	21.7344600
							坪數	6.57